

AutoCAD® Self-paced Learning Modules
AutoCAD 2D Advanced
Module 18
Customizing Toolbars

Learning Outcomes:

When you have completed this module, you will be able to:

1. Create customized toolbars that include flyouts using predefined commands and macros.

Customizing Toolbars

Toolbars can easily be created, customized and saved using predefined commands and macros using the Customize User Interface. See Figure 18-1.



Figure 18-1
A Customized Toolbar

Flyouts

Custom toolbars can be created with flyouts. See Figure 18-2

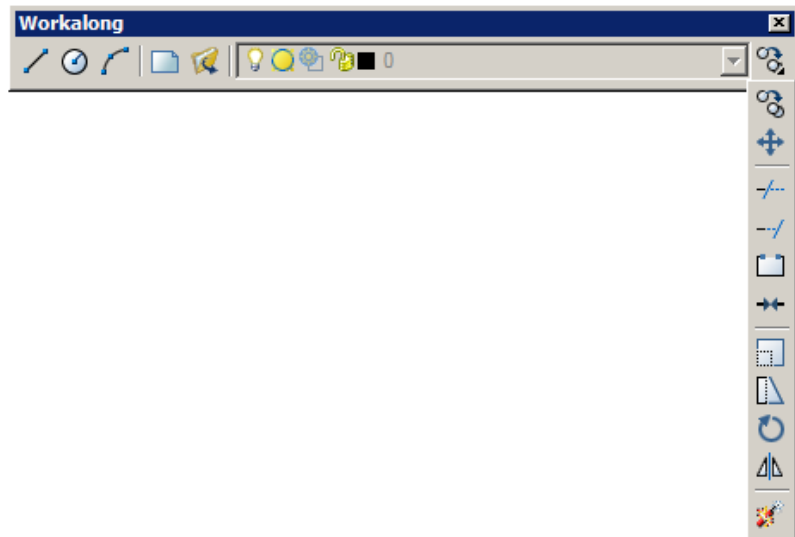


Figure 18-2
A Customized Toolbar With A Flyout

Toolbars in AutoCAD 2009-2010

Toolbars have a slightly different look in AutoCAD 2009-2010 but work the same as in AutoCAD 2006 to 2008. The toolbars shown in this module are taken from AutoCAD 2008. Figure 18-3 shows how the same toolbar shown in Figure 18-1 appears in AutoCAD 2009-2010.

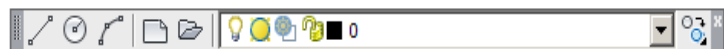


Figure 18-3
Toolbars in AutoCAD 2009-2010

**WORK
ALONG**

Creating and Customizing Toolbars

Step 1 Start a new drawing using the template Template 2D Advanced English.dwt.

Step 2 Check the current profile and if required, set it to AutoCAD 2D Advanced.

Step 3 Set the current workspace to 2D Workalongs. (Figure Step 3)

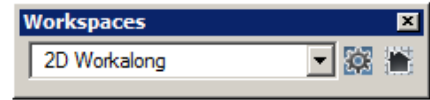


Figure Step 3

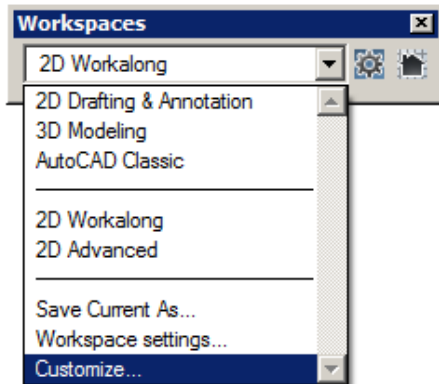


Figure Step 4

Step 4 Pull down the workspaces list and click Customize. (Figure Step 4)

Step 5 In the Customizations in All CUI Files area, expand the ACAD CUI file and select Toolbar to highlight it. While it is selected, right click it. In the right-click menu, select New Toolbar. (Figure Step 5)

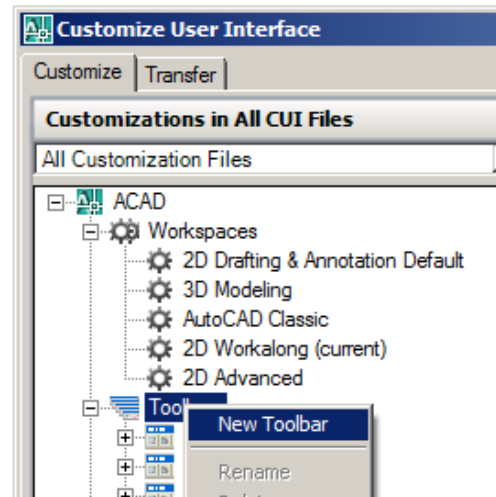


Figure Step 5

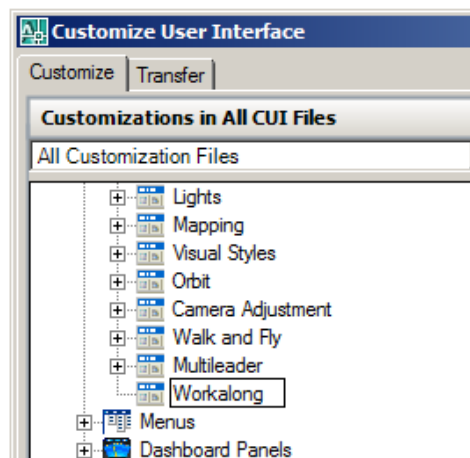


Figure Step 6

Step 6 Enter the name Workalongs for the name of the new toolbar. (Figure Step 6)

Step 7 Set the Command List to All Commands. Scroll down and select the Arc command. While holding down the left mouse button, drag the Arc command into the Workalong toolbar. The Arc command should now appear under the Workalong toolbar. (Figure Step 7A and 7B)

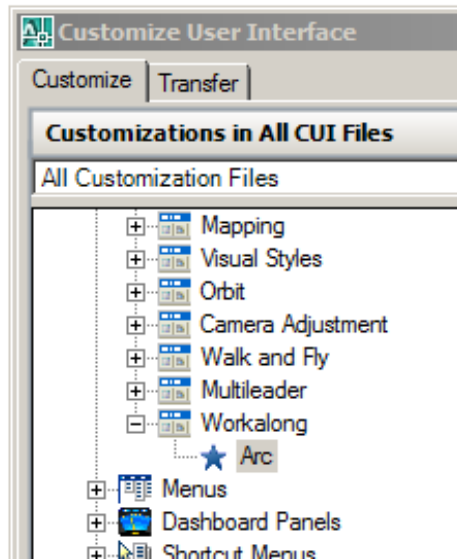


Figure Step 7B

Step 8 Do the same thing with the Circle and the Line commands. (Figure Step 8)

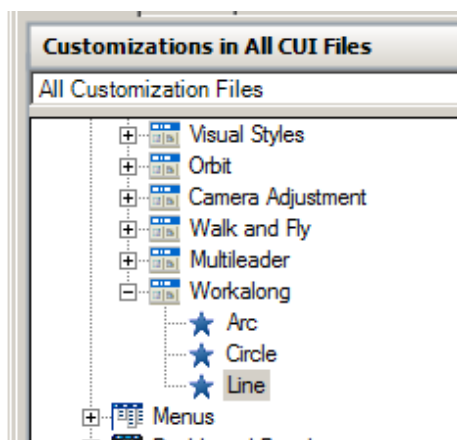


Figure Step 8

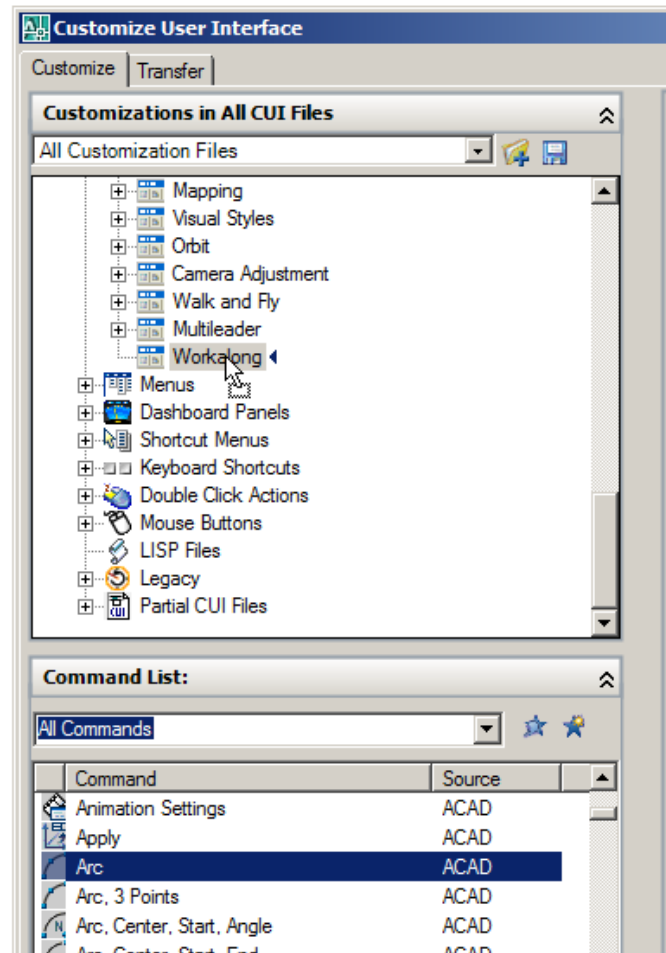


Figure Step 7A

Step 9 Set the Command List to File and scroll down to the Close command. (Figure Step 9)

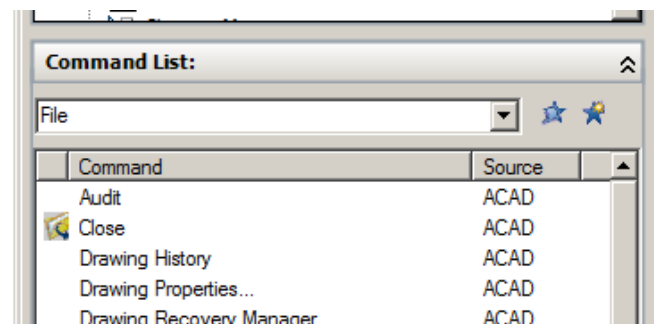


Figure Step 9

Step 10 From the File command list, add the Close, New and Open commands to the Workalong toolbar as you did in Step 7. (Figure Step 10)

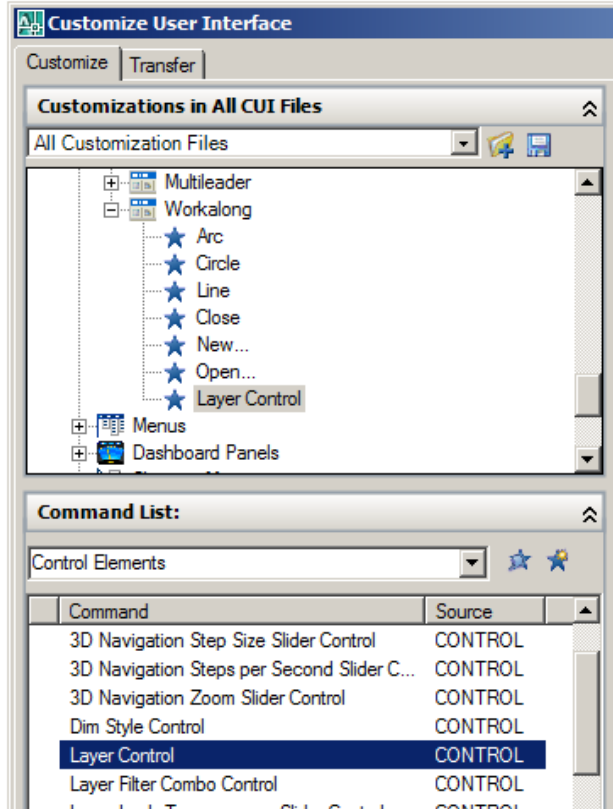


Figure Step 11

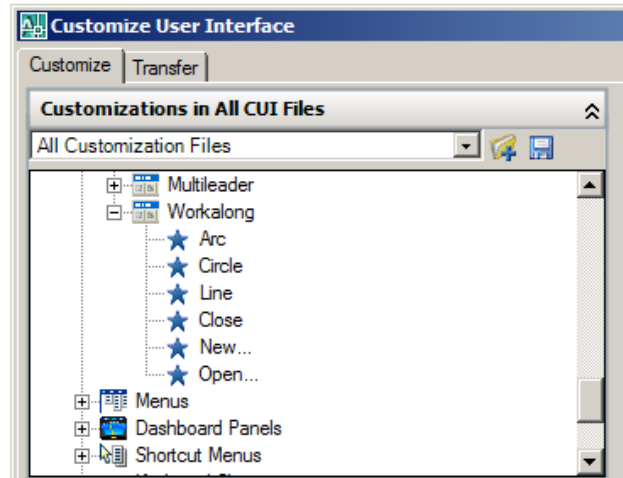


Figure Step 10

Step 11 From the Control Elements command list, add the Layer Control command to the Workalong toolbar. (Figure Step 11)

Step 12 Select and right click the Workalong toolbar. In the right-click menu, click Insert Separator twice to add two separators (Figure Step 12A and 12B)

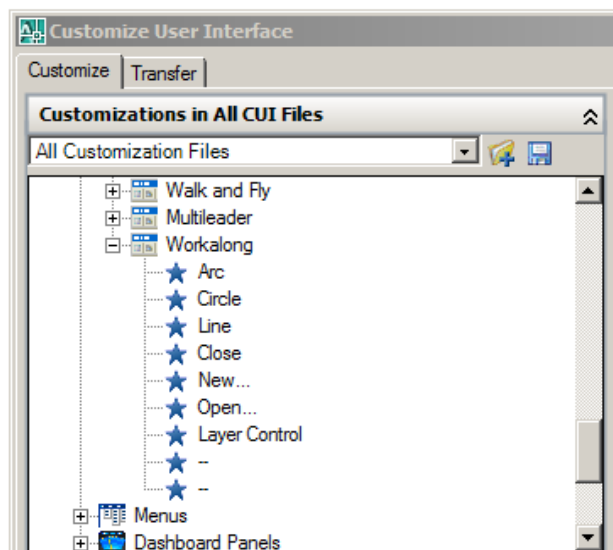


Figure Step 12B

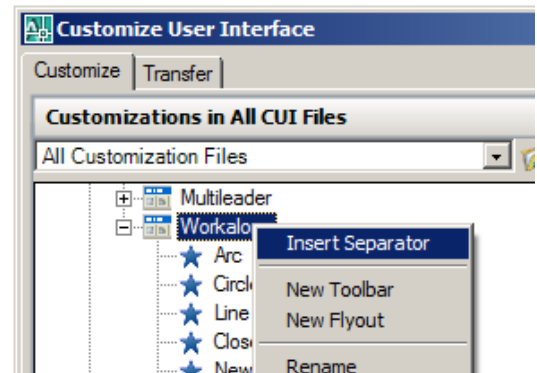


Figure Step 12A

Step 13 Drag the separators to change their locations as shown in the figures. (Figure Step 13A and 13B)

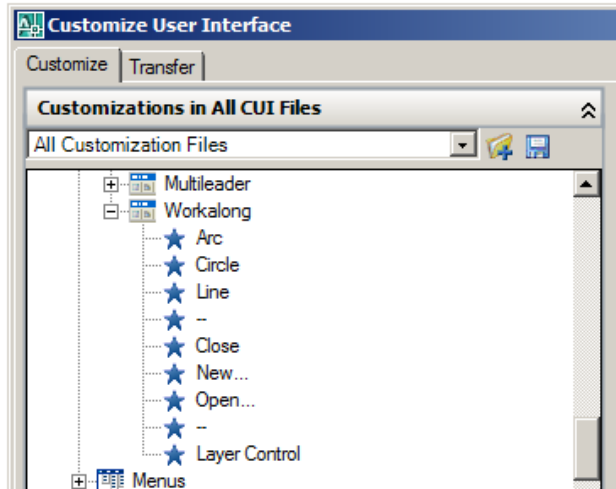


Figure Step 13B

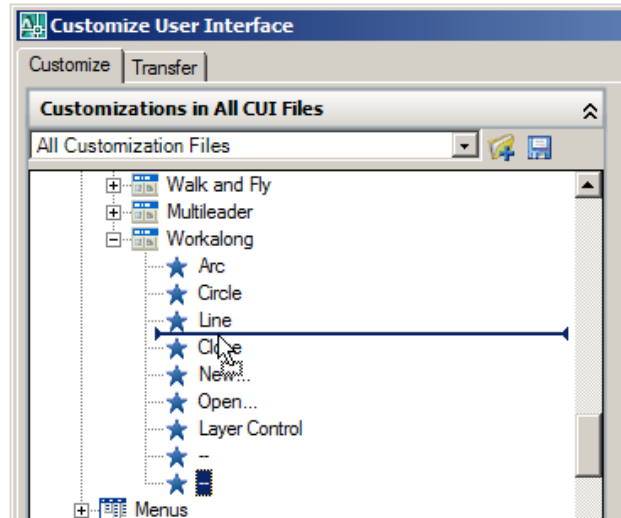


Figure Step 13A

Step 14 Change the location of the commands to match the figure by dragging them. (Figure Step 14)

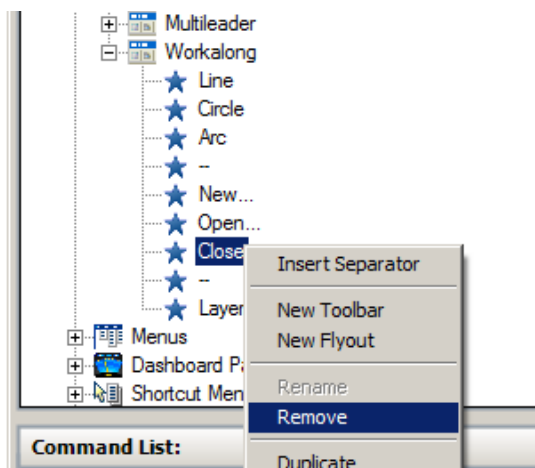


Figure Step 15A

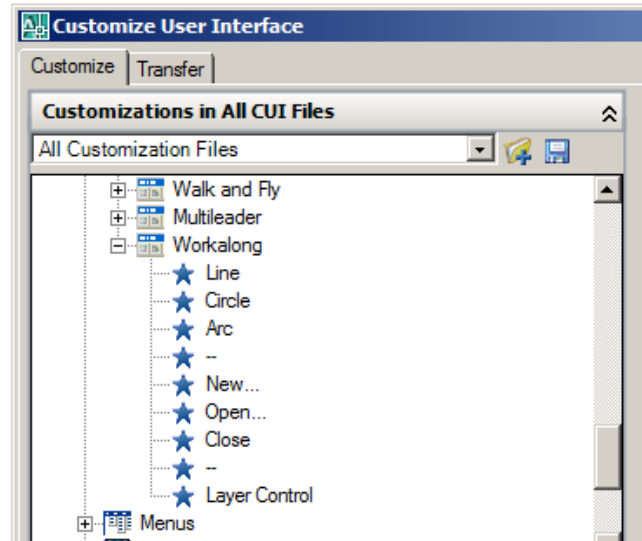


Figure Step 14

Step 15 Remove the Close command by using the right-click menu. The completed Workalong toolbar should match the Figure Step 15B. (Figure Step 15A and 15B)

Step 16 Click Apply and OK to close the Customize User Interface dialogue box. The Workalong toolbar should appear in the AutoCAD graphic window as shown in the figure. (Figure Step 16)

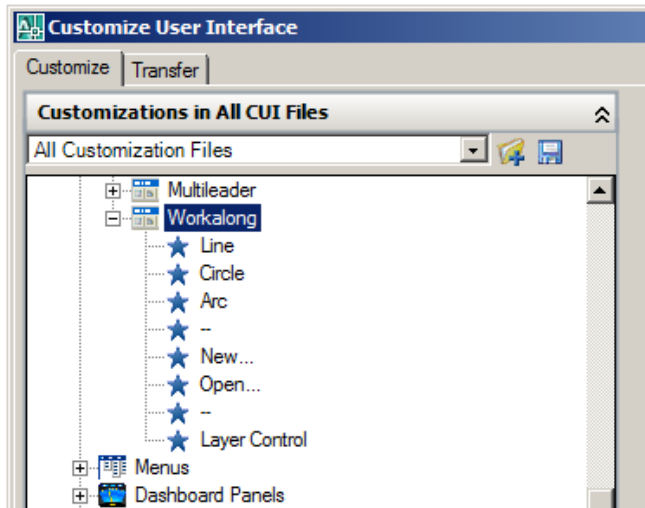


Figure Step 15B



Figure Step 16

Step 17 Open the Customize User Interface dialogue box. Expand the toolbars and select the Workalong toolbar. In the Properties area, click the small More icon in Aliases line. (Figure Step 17)

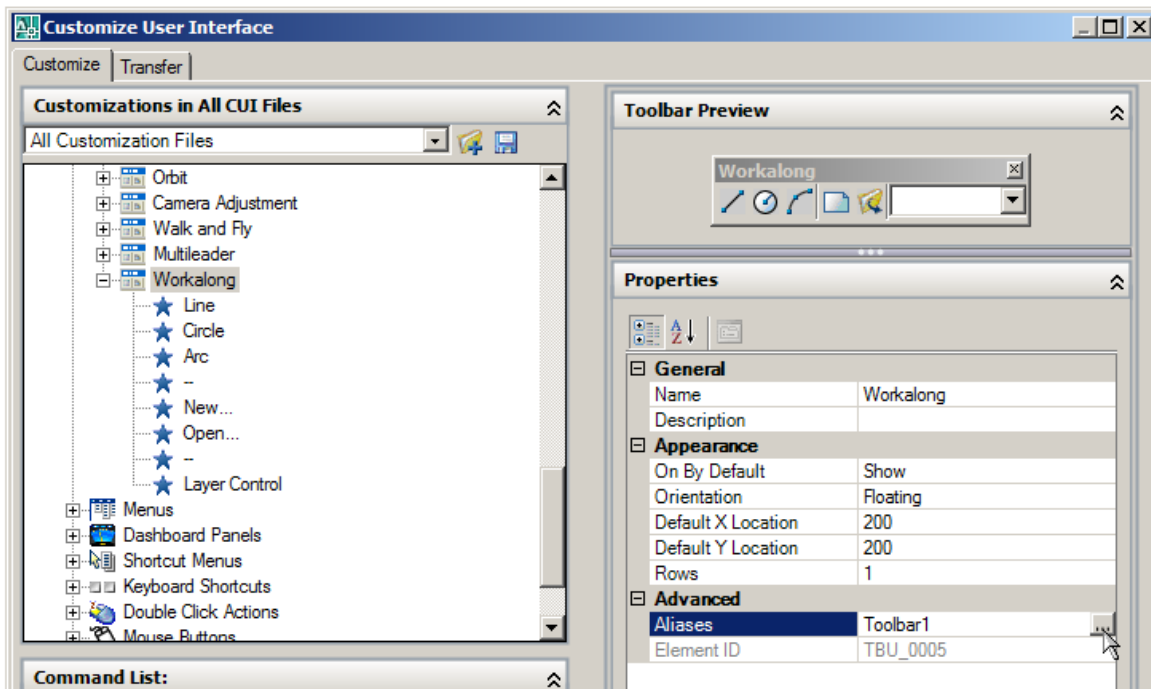


Figure Step 17

Step 18 The Aliases dialogue box will open. Change the alias TOOLBAR1 to AM-WORKALONG. (Figure Step 18A, 18B and 18C)

Author's Comments: The alias TOOLBAR1 may be different on your computer.

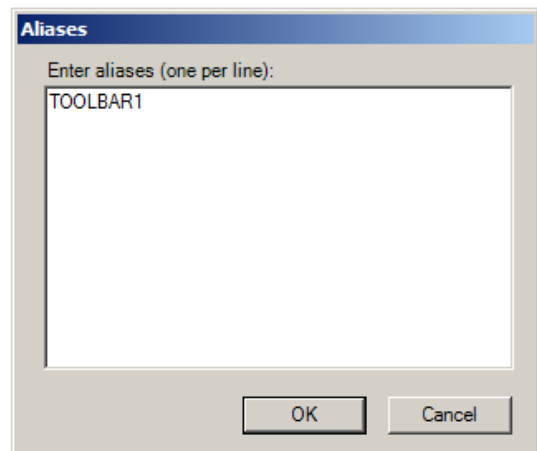


Figure Step 18A

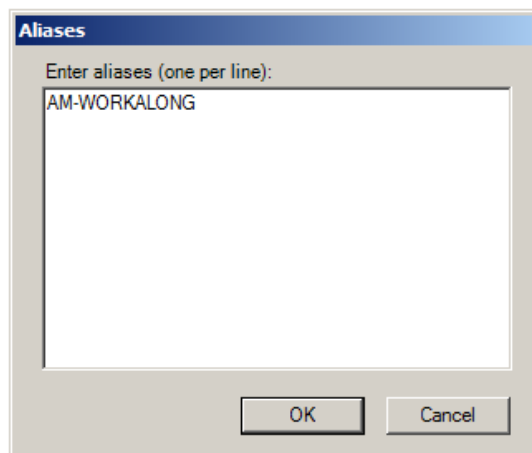


Figure Step 18B

Author's Comments: I used the alias name AM-WORKALONG. The AM is an acronym for AutoCAD Modules.

Step 19 Click OK to close the CUI dialogue box.

Step 20 Close the drawing.

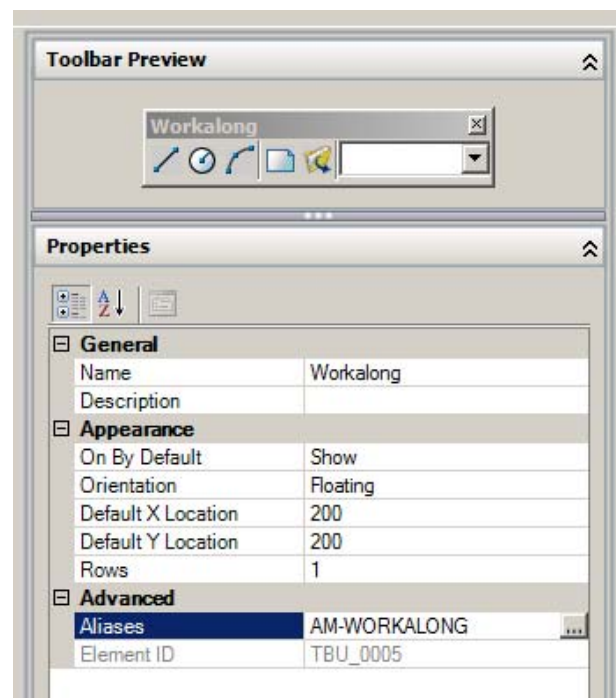


Figure Step 18C

USER TIP

When you create a new toolbar ensure you rename the alias that was automatically assigned but the CUI. This will avoid a lot of confusion in future menu customization.

**WORK
ALONG**

Creating Flyout Toolbars

Step 1 Start a new drawing using the template Template 2D Advanced English.dwt.

Step 2 Check the current profile and if required, set it to AutoCAD 2D Advanced.



Figure Step 3

Step 3 Set the current workspace to 2D Workalongs. (Figure Step 3)

Step 4 Open the Customize User Interface dialogue box. Using what you learned in the first workalongs, add a toolbar Workalongs-Modify and change its aliases to AM-WORKALONG-MODIFY. (Figure Step 4A and 4B)

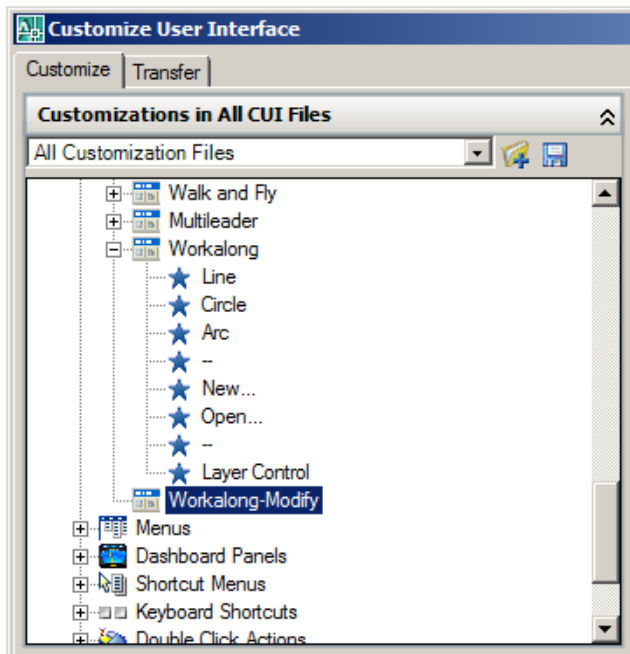


Figure Step 4A

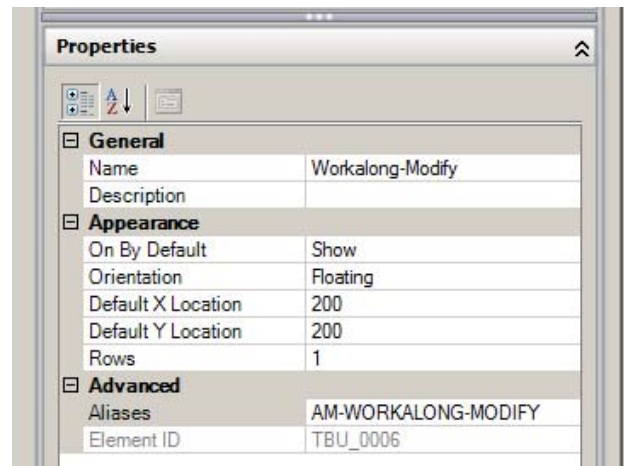


Figure Step 4B

Step 5 Add the commands and separators as shown in the figure. (Figure Step 5)

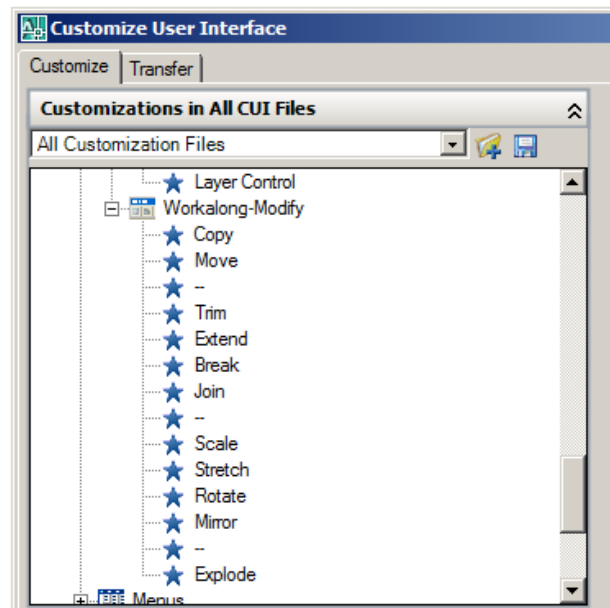


Figure Step 5

Step 6 Select and right click the Workalong-Modify toolbar that you just created. In the right-click menu, click Copy. (Figure Step 6)

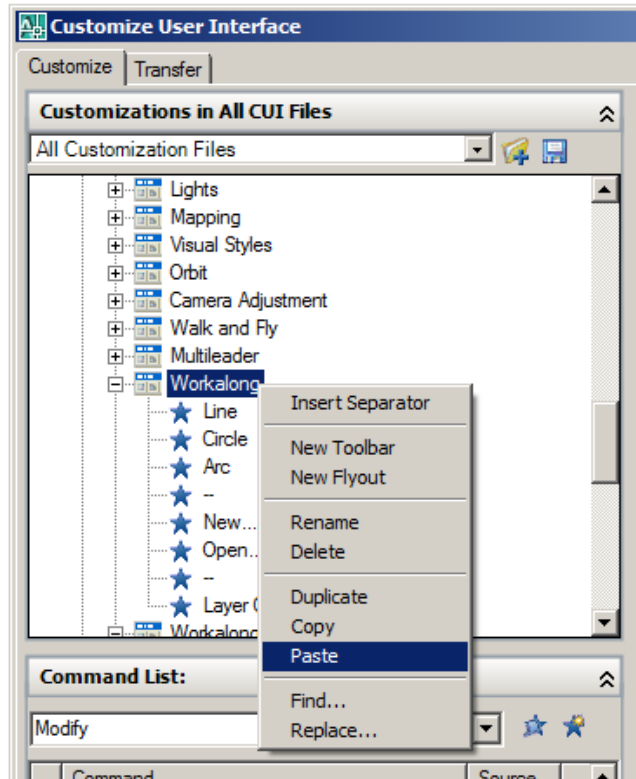


Figure Step 7

Step 8 The Workalong-Modify toolbar should now appear as a submenu in the Workalong toolbar as well as being a toolbar itself. Close the Customize User Interface dialogue box. (Figure Step 8)

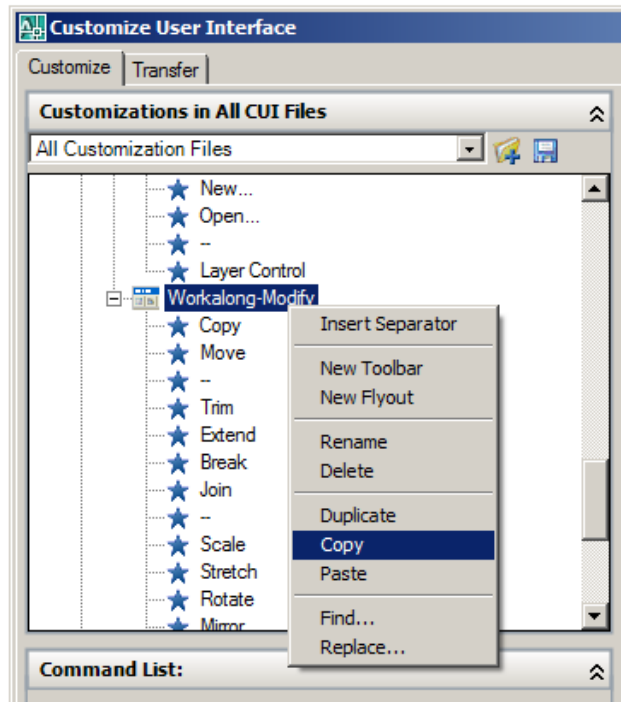


Figure Step 6

Step 7 Select and right click the Workalong toolbar. In the right-click menu, click Paste. (Figure Step 7)

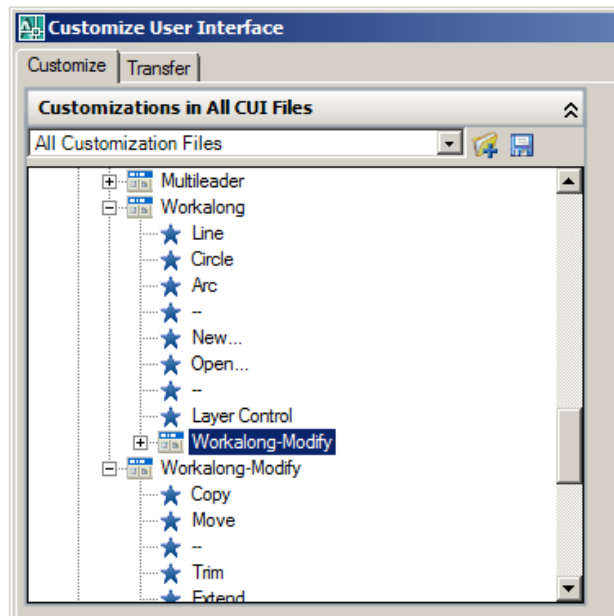


Figure Step 8

Step 9 Enable the display of the new toolbar Workalong-Modify. (Figure Step 9)



Figure Step 9

Step 10 Enable the display of the toolbar Workalong if necessary. Test the flyout toolbar by clicking and holding down the mouse on the Copy command. (Figure Step 10)

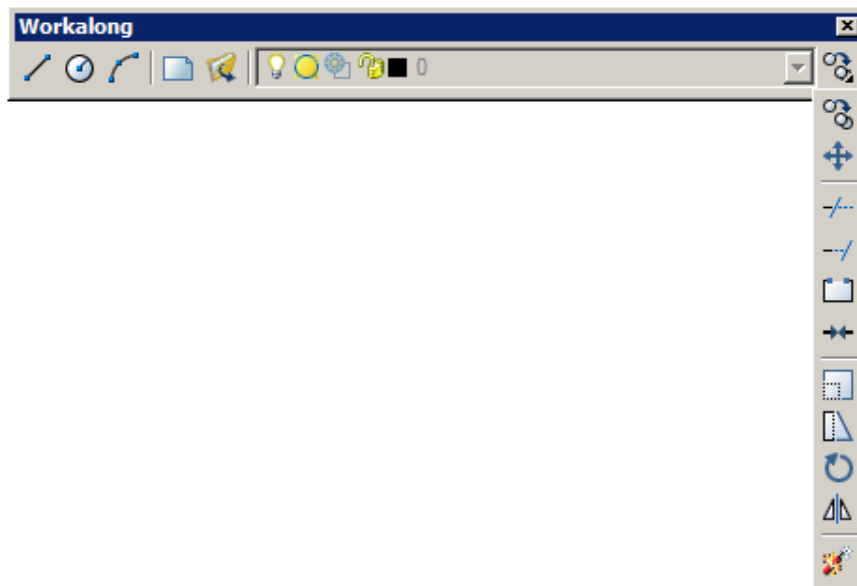


Figure Step 10

Step 11 Close the drawing.

The Key Principles in Module 18

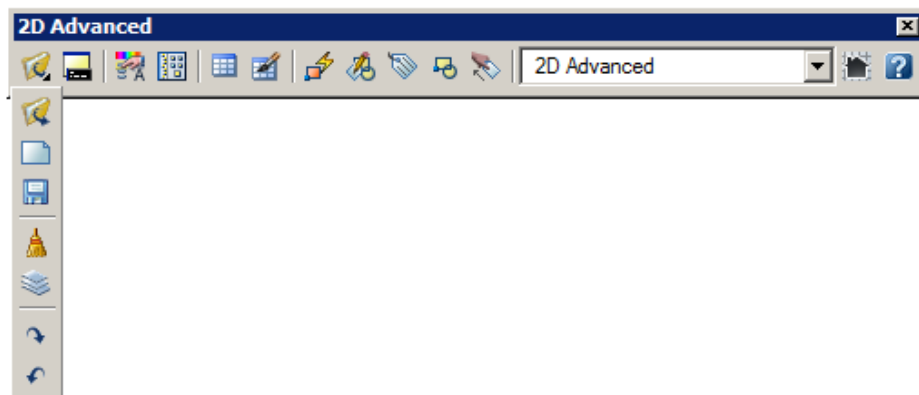
1. When you create a new toolbar ensure you rename the alias that was automatically assigned but the CUI.

Lab Exercise 18-1**Time Allowed: 40 Min.**

Name	Template
N/A	Template 2D Advanced English.dwt

Instructions:

- STEP 1** Start a new drawing and ensure that the current profile is set to AutoCAD 2D Advanced.
- STEP 2** Set the current workspace to 2D Advanced
- STEP 3** Using Figures Step 3A and 3B, create the custom toolbars 2D Advanced and 2D Advanced-File. Make the 2D Advanced-File to be a flyout on the left side of the 2D Advanced toolbar.

**Figure Step 3A**

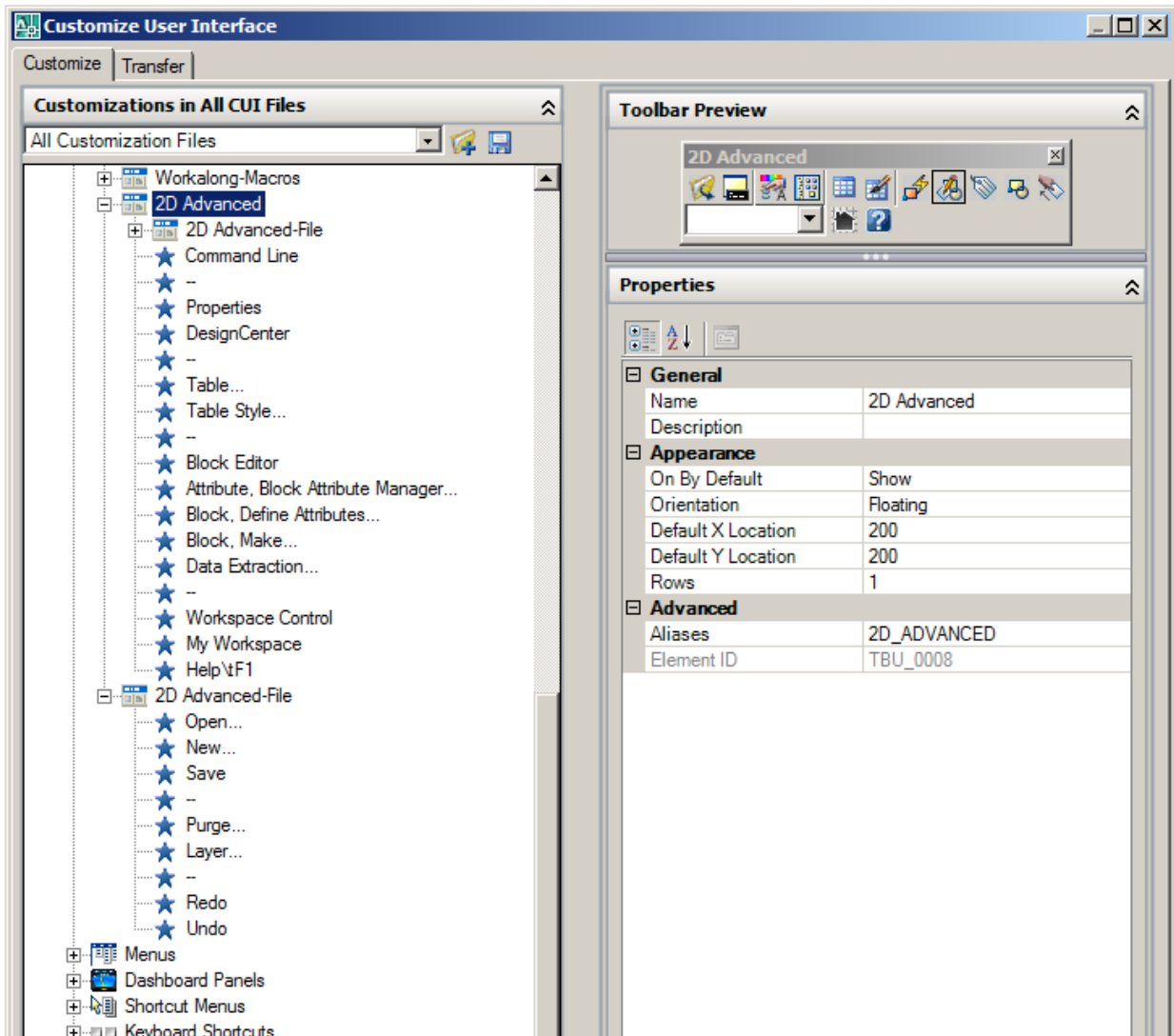


Figure Step 3B